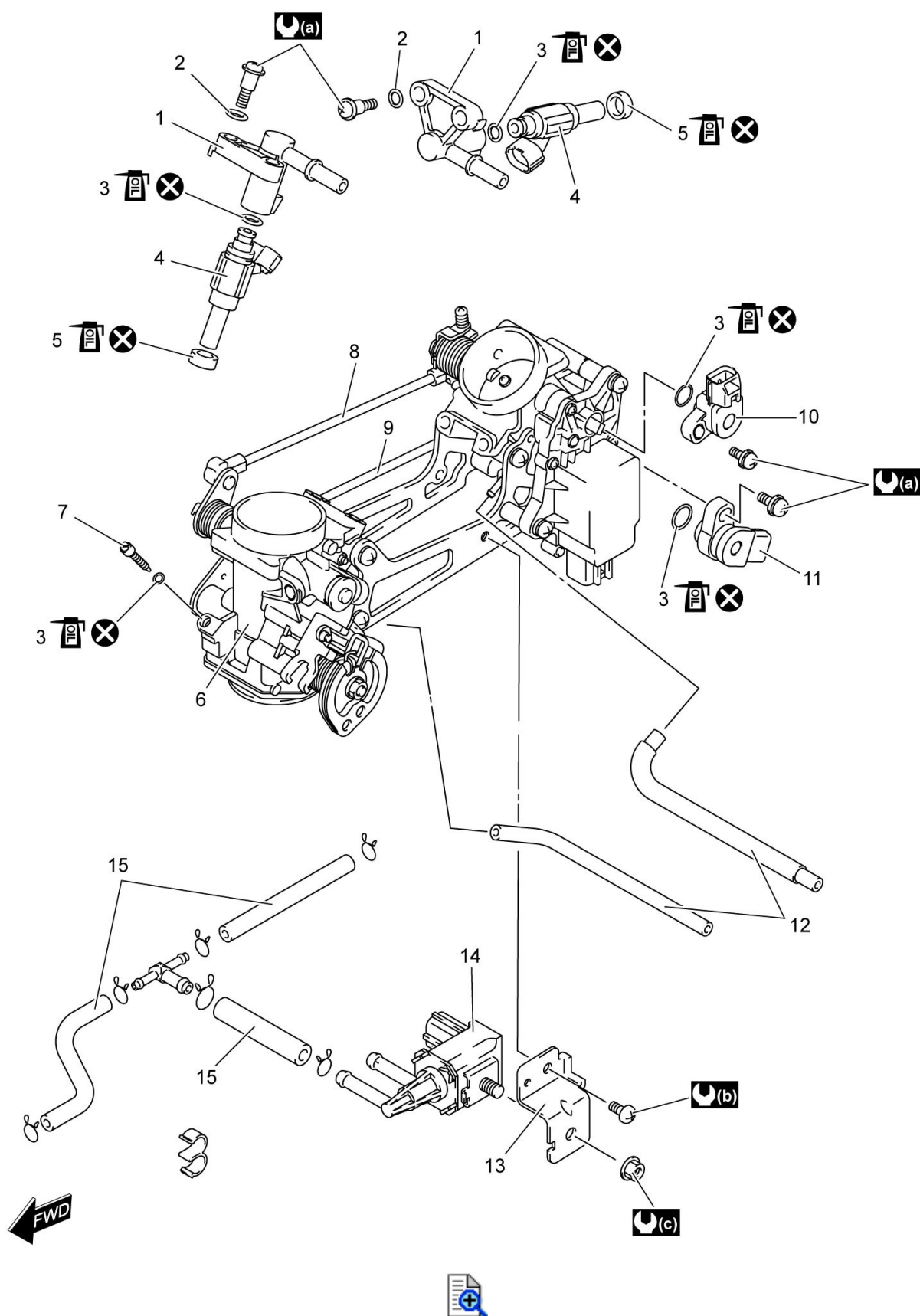







1C



# Throttle Body Assembly Components



1.	Fuel delivery pipe	8.	Secondary throttle link rod	15.	Purge hose (If equipped)
----	--------------------	----	-----------------------------	-----	--------------------------

2.	Rubber washer	9.	Throttle link rod	 (a) :	3.5 N·m (0.35 kgf-m, 2.5 lbf-ft)
3.	O-ring	10.	STP sensor	 (b) :	5 N·m (0.5 kgf-m, 4.0 lbf-ft)
4.	Fuel injector	11.	TP sensor	 (c) :	7 N·m (0.7 kgf-m, 5.0 lbf-ft)
5.	Cushion seal	12.	Vacuum hose	 :	Apply engine oil.
6.	Throttle body	13.	EVAP system purge control solenoid valve bracket (If equipped)	 :	Do not reuse.
7.	Synchronizing screw	14.	EVAP system purge control solenoid valve (If equipped)		